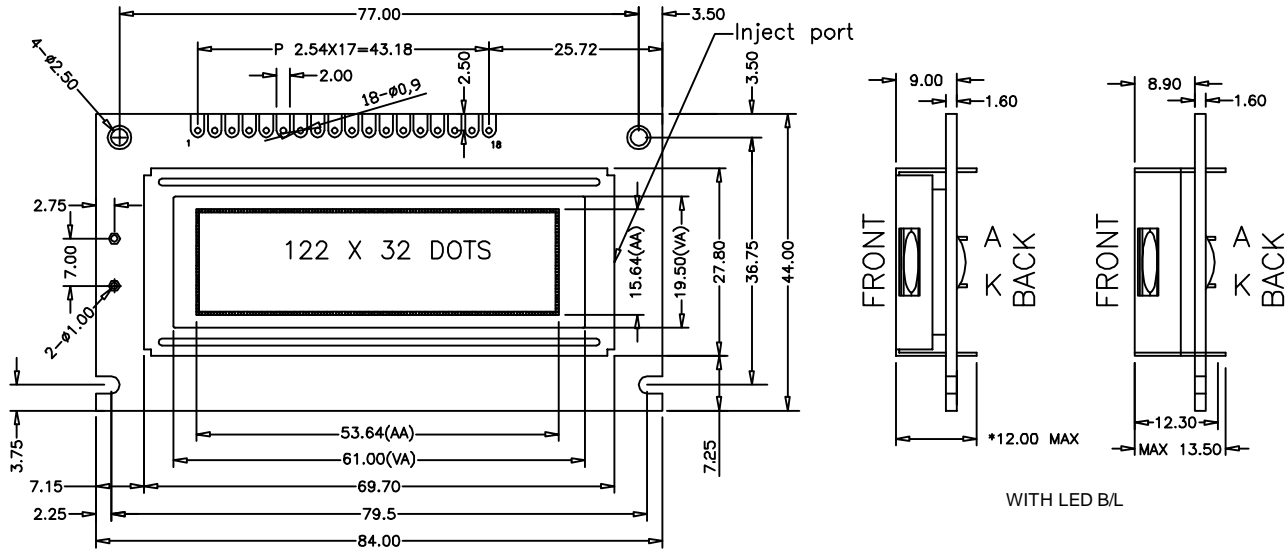
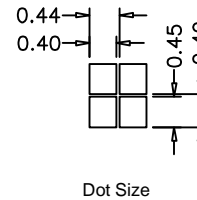


PG-120319 Series

OUTLINE DIMENSION



MECHANICAL DIMENSION	
Overall Dimension (mm)	84.0 X 44.0 X 12.0/13.5
Viewing Area (mm)	61.0 X 19.5
Format	122 SEG × 32 COM
Dot Size (mm)	0.40 X 0.45
Dot Pitch (mm)	0.44 X 0.49



ABSOLUTE MAXIMUM RATINGS				
Parameter	Symbol	MIN	MAX	Unit
Supply Voltage for Logic	V _{dd} -V _{ss}	-0.3	+8.0	V
Supply Voltage for LCD	V _{lcd}	V _{dd} - 16.5	V _{dd} + 0.3	V
Input Voltage	V _{in}	V _{dd} - 0.3	V _{dd} + 0.3	V

ELECTRICAL CHARACTERISTICS (V _{DD} =5.0V ; Top=25° C)					
Parameter	Symbol	MIN	Typical	MAX	Unit
Power Supply Voltage	V _{dd} -V _{ss}		5.0		V
LCD Operating Voltage	V _{op}		4.8		V
LCM Current Consumption	I _{dd}				mA
Backlight Current Consumption	LED (Edge)				mA
	LED (Array)				mA
Driving Method	1/32 Duty 1/5 Bias				

NOTES

IC Controller / Driver: PT6520 or Equivalent
LCD Options: Y/G STN, Gray STN, Blue STN
Backlight Options: None, Y/G LED, White LED
Viewing Angle: 6:00
Operating Temperature : -20° C - +70° C
Storage Temperature : -30° C - +80° C

PIN ASSIGNMENT		
Pin No.	Symbol	Function
1	VSS	Power Supply (GND)
2	VDD	Power Supply (+)
3	V0	Contrast Adjust
4	A0	Register select signal
5	E1	Enable Signal 1
6	E2	Enable Signal 2
7	RW	Data Read / write
8	D0	Data Bus Line
9	D1	Data Bus Line
10	D2	Data Bus Line
11	D3	Data Bus Line
12	D4	Data Bus Line
13	D5	Data Bus Line
14	D6	Data Bus Line
15	D7	Data Bus Line
16	RES	
17	LEDA	Power Supply for LED B/L (-)
18	LEDK	Power Supply for LED B/L (+)