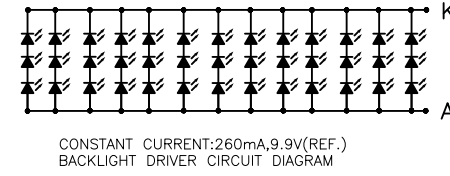
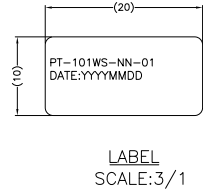
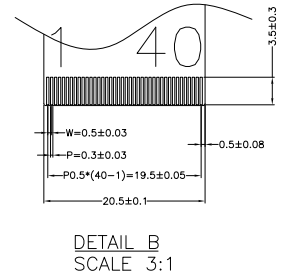
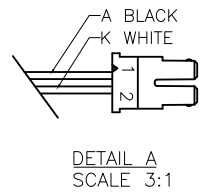


PIN	SYMBOL	PIN	FUNCTION
1	VCOM	17	RXCLKIN-
2	VDD	18	RXCLKIN+
3	VDD	19	GND
4	NC	20	RXIN3-
5	RESET	21	RXIN3+
6	STBYB	22	GND
7	GND	23	NC
8	RXIN0-	24	NC
9	RXIN0+	25	GND
10	GND	26	NC
11	RXIN1-	27	DIMO
12	RXIN1+	28	SELB
13	GND	29	AVDD
14	RXIN2-	30	GND
15	RXIN2+	31	LED-(NC)
16	GND	32	LED-(NC)
17	RXCLKIN-	33	L/R
18	RXCLKIN+	34	U/D
19	GND	35	VGL
20	RXIN3-	36	CABCEN1(NC)
21	RXIN3+	37	CABCEN0(NC)
22	GND	38	VGH
23	NC	39	LED+(NC)
24	NC	40	LED+(NC)
25	GND		
26	NC		
27	DIMO		
28	SELB		
29	AVDD		
30	GND		
31	LED-(NC)		
32	LED-(NC)		
33	L/R		
34	U/D		
35	VGL		
36	CABCEN1(NC)		
37	CABCEN0(NC)		
38	VGH		
39	LED+(NC)		
40	LED+(NC)		



ITEM	PARAMETERS	ITEM	PARAMETERS
DISPLAY TYPE	TFT(10.1"),Normal White	VIEWING DIRECTION	12 O'CLOCK
DRIVING METHOD	1024*RGB*600 PIXEL	OPERATING TEMPERATURE	-20°C TO +70°C
POLARIZER TYPE	TRANSMISSIVE	STORAGE TEMPERATURE	-30°C TO +80°C
LCD OPERATING VOLTAGE	XXXX	BACKLIGHT	EDGE,WHITE
LOGIC VOLTAGE(VDD)	3.3V	CONNECTOR	COG+FPC
RoHS COMPLIANT			

MARK\*\*ARE IMPORTANT DIMENSIONS,MARK(\*)ARE REFERENCE DIMENSIONS,MARK\*★ARE SPECIAL CHARACTERISTICS RELATED TO SAFETY,MARK\*\*★ ARE SPECIAL CHARACTERISTICS IRRELEVANT TO SAFETY,MARK\*●ARE IMPORTANT CHARACTERISTICS EXCEPT FOR THE SPECIAL CHARACTERISTICS.

REVISION										DRAWN BY		UNLESS OTHERWISE SPECIFIED:		POLYTRONIX, INC.		
REV	ECO NO	DESCRIPTION	DWN	DATE	CHKD	DATE	APVD	DATE	APVD	DATE	DATE	DATE	DATE	DATE	DATE	DATE
A		Initial		Sept./11/2015												
										ZHXING,XU		1) ALL DIMENSIONS ARE IN MM.		805 ALPHA DRIVE		
										DATE: Sept./11/2015		2) TOLERANCE		RICHARDSON, TX 75081		
										CHECKED BY		.XXX ±.127		972.238.7045		
										DATE:		.XX ±.254		CUSTOMER ID NUMBER:		
										APPROVED BY		ANGLES ±0.5°		SHEET 1 OF 1		
										DATE:		THIRD ANGLE PROJECTION		TITLE:		
										APPROVED BY		DRAWING SIZE: C		CAGE CODE NO. 2Y126		
										DATE:		DRAWING SCALE: NONE		POLYTRONIX PART NUMBER: PT-101WS-NN-01		
												DO NOT SCALE DRAWING		REV.: A		